



Electrical & Technical Supply

For Shipbuilding, Ship Repair and On-and-Offshore Industries
 S\$19 Million Ready-Stock over 15,000 Products from International Brands
 200,000 Sq. Ft Warehouse with Digital Management System
 24/7 online eStore for efficiency and transparency
 Environmental Sustainability with LED Lightings Retrofit



Marine, Offshore & Data Communication Cables

LED Lightings

Navigation & Signalling

IMPA Products

Hazardous

Accessories

Electronics & Automation

Power & Hand Tools

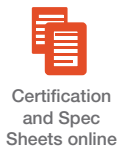
Beng Hui MRO Catalogue

15,000 Products Excellent Guide for your Electrical & Technical Stores:

Inclusion of cross reference to Marine Codes, Specifications & Images



bh-estore.com



Technical Catalogue

Request for Quotation by attaching file

Technical Live Chat

Certification and Spec Sheets online

Online Payment Available

International Shipping



Cable Solutions



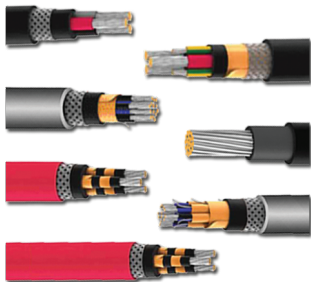
Cables



NEK606 Offshore Cables

*(Flame Retardant / Fire Resistant)

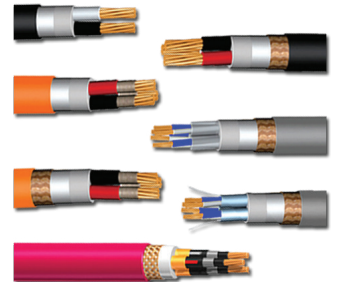
- Power Cable
 - Low Voltage Cable (0.6/1kV)
 - Mid Voltage Cable (3.6/6kV - 12/20kV)
 - EMC (0.6/1kV - 12/20kV)
 - VFD (0.6/1kV, 6/10kV - 12/20kV)
- Instrumentation, Control & Telecommunication
 - Individual Screen (250V)
 - Collective Screen (250V)
 - Individual & Collective Screen (250V)



Marine Shipboard Cables

*(Flame Retardant / Fire Resistant)

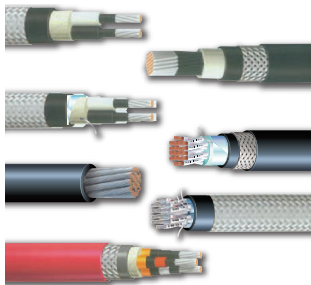
- Power Cable
 - Low Voltage Cable (0.6/1kV)
 - Mid Voltage Cable (3.6/6kV - 12/20kV)
 - VFD (0.6/1kV(1.8/3kV), 3.6/6kV, 6/10kV)
- Instrumentation, Control & Telecommunication
 - Individual Screen (250V)
 - Collective Screen (250V)
 - Individual & Collective Screen (250V)



JIS Shipboard Cables

*(Flame Retardant / Fire Resistant)

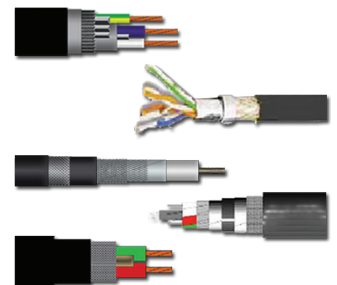
- Power Cable
 - Low Voltage Cable (0.6/1kV)
 - High Voltage Cable (3.6/6kV - 8.7/15kV)
 - Common Shield (0.6/1kV)
- Control & Signal Cable
 - Common Shield (250V)
- Telecommunication & Instrumentation Cable
 - Common Shield (250V)
 - Individual Shield (250V)
- Flexible Cable (0.6/1kV)
- Switchboard Cable (0.6/1kV)



Marine Data & Coaxial Cables

*(Mud Resistant / Non Mud Resistant)

- LAN CAT7 SSTP Flex
- Optical Fibre QFC1
- Optical Fibre AICI
- CAN BUS SHF2
- Profibus Marine SHF1 / LSOH SHF2

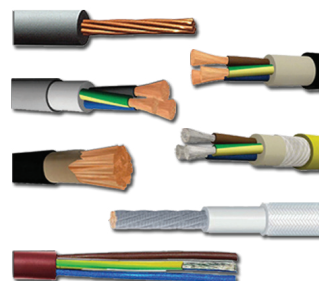


*(Amour / Non Amour)

- RG Coaxial Cable

Industrial Cables

- H05V-K / H07V-K
 - PVC Switchboard Wiring Cables
- H07RN-F
 - Neoprene Flexible Power Cable
- H05VV-F
 - PVC/PVC Flexible Control Cable
- H01N2-D
 - Welding Cable
- SiHF
 - Heat Resistance Cable
- NSHTöU
 - Shore to Ship Flexible Power Supply Cable
- SGW
 - Heat Resistance Cable 180°C





Cable Accessories

Cable Glands / Adaptors / Reducers

*(ATEX and Watertight)

- Polyamide
- Brass Nickel Plated
- Stainless Steel



Junction Boxes / Enclosures

*(ATEX and Watertight)

*(IP Rating of IP56, IP66, IP68)

- Stainless Steel
- Sheet Steel
- Aluminium
- Polycarbonate
- GRP
- Die Cast
- Thermoplastic



Tools and Equipment

- Crimping Tools
 - Cable Shoe
 - Cable Link
 - Data Cable
- Cable Cutter
- Measuring Equipment
 - Digital Multimeter
 - Clamp Meter
 - Insulation Tester
 - Circuit Tester
 - Voltage Tester
 - Test Probe



Cable Terminals / Ferrules

- Cable Lugs
- Cable Terminals
 - Ring Terminal
 - Blade Terminal
 - Pin Terminal
 - Fork Terminal
 - Snap-On Terminal
 - Bullet Terminal
 - Hook Terminal
 - Non-Insulated Connector Link
- Ferrules
 - Insulated Bootlace Ferrules
 - Non-Insulated Ferrules



Switches, Plugs and Sockets

*(IP Rating of IP40, IP44, IP55, IP56, IP66 & IP67)

- IEC 60309 Plugs and Sockets
 - Male Plugs / Female Connectors
 - Wall / Panel Mount Socket
- ATEX Plugs and Sockets
 - Male Plugs / Female Connectors
 - Switch Cast Brass
 - Wall Mount Socket
- Switch Sockets
 - Accommodation Switch Socket
 - Switch Socket and Plug
- Switches
- Mini Connectors and Joint Boxes



Cable Ties / Straps

- Stainless Steel Cable Tie
 - DNV & ABS Certification
- Nylon Cable Tie (Black/White)
- Cable Tie Base
- Band Strap
 - DNV & ABS Certification
- Band Buckle
 - DNV & ABS Certification



Tubes / Sleeves / Others

- Electric Empire / Glass / PVC Tube
- Vinyl Wire End Cap
- Heat Shrinkable Sleeves
 - Medium Wall
 - Wrap Around Repair Sleeve
- Terminal Strips / Connectors
- Insulation Tapes
- Sealing Compound
- Cable Ladders



Lighting Solutions



Marine & Offshore Lightings

Searchlights



- Deck Control
- Cabin Control
- Remote Control
- Halogen / Xenon / LED

Floodlights



- Metal Halide
- Halogen
- Mercury
- High Pressure Sodium

Berth/ Mirror Lights



- Berth Light
 - 110V / 220V
 - IP20 / IP30
- Mirror Light
 - 110V / 220V
 - IP20 / IP56

Ceiling/Kitchen/ Downlights



- Ceiling Light
 - 110V / 230V
 - IP20 - IP67
- Down Light
 - 1 X 13WPL / 18WPL
 - IP20 / IP44
- Kitchen Light
 - 2 x 12.5W
 - IP66

Corner/ Exit Lights



- Corner Light
 - 230V
 - IP20 / IP30
- Exit Light
 - 230V
 - IP20 / IP44

Navigation Lights



- Masthead
- Port
- Stern
- Starboard
- Signal
- Towing
- LED / Incandescent
- Control Panel

ATEX Lightings

Floodlights



- 120V / 230V
- Halogen / Sodium / Metal Halide / LED

Technical Luminaire



- Zone 1 & 2
- IP66 / IP67
- Fluorescent / LED

Exit Lights



- Exd / Exe Range
- 110V / 230V
- Zone 1 & 2

Pendant Lights



- 110V / 230V
- IP56 / IP66
- Zone 1 & 2

Pneumatic Lights



- 12V / 24V / 120V / 220V
- IP56 / IP66

LED Lightings

Floodlights



- 24V DC / 100 - 240V AC/DC
- IP66
- Alternative to 250W / 400W HID Lamps

Modular Floodlights



- 24V DC / 100 - 120V AC / 220 - 240V AC
- IP66
- Available in Configurations of 1,2,3,4,6,8 and 16

Technical Luminaire



- 100 - 120V AC / 220 - 240V AC
- IP 30, 44, 55, 67, 68
- Alternative to 18W / 36W Fluorescent
- Emergency System Applicable

Pendant/ Wall Lights



- 24V DC / 100 - 120V AC / 220 - 240V AC
- IP56
- 10/12/13W or 30W
- Alternative to 100W / 300W Bulb

Handlamps



- 24V DC / 100 - 120V AC / 220 - 240V AC
- IP56
- 10/12/13W or 30W
- Alternative to 100W / 300W Bulb

Eco/ SOP Linear



- 24V DC / 100 - 130V AC / 220 - 254V AC
- IP20
- 10 or 20W
- Alternative to 1x18W / 1x36W



Lighting Accessories

Watertight Pendant Lights



- 24V - 250V
- IP56 / IP68
- Brass / PBT

Desk / Charts Table Lights



- 12V / 110V / 230V

Portable Hand Lamps



- 24V / 110V / 230V
- Polycarbonate / Rubber

Lamps



Lamp / Starter Holders



Starters



Ignitors / Capacitors



Ballasts



Glass Globes / Guards



Helideck Lights



- Windsock
- Floodlight
- Perimeter Light
- Obstruction Light

Rechargeable Flashlights



- Headlite
- Head Lantern
- Hand Torch

Portable Floodlights/ Torches



- 100 - 240V AC/DC
- IP54
- Rechargeable Lithium Ion Battery
- Alternative to 200W / 400W Incandescent Light

Chart Table Light



- 100V - 240V AC
- Dimmable
- CCT Changeable

Downlight



- 24V DC / 100V - 120V AC / 220V - 240V AC
- IP44
- Alternative to 50W Halogen Bulb / 1X18W / 1X26W CFL

Panel Lights



- 100V - 240V AC
- IP22 / IP44
- Alternative to T8 Lamps 1X18W / 2X18W / 3X18W / 4X18W
- 353 X 353mm / 625 X 625mm 625 X 257mm
- Emergency System Applicable

Explosion Proof Modular Floodlights



- AC100-120V/AC220-240V
- IP66/67
- ATEX and IEC Ex approved - Zone 1, 2, 21 & 22
- IEC 60533
- Certified by Bureau Veritas & ClassNK

Other Marine Solutions



ATEX Sounders / Beacons

Flashlights



- Exd
- 12-48V DC / 100-240V AC
- Zone 1 & 2
- IP66

Beacons



- Exd
- 12-48V DC / 100-240V AC
- Zone 1 & 2
- IP66
- Red / Amber / Blue / Green

Sounders



- Exd
- 12-48V DC / 100-240V AC
- IP56 / IP66
- 110dB/m / 115dB/m

Sounder & Beacons



- Exd
- 12-48V DC / 100-240V AC
- Zone 1 & 2
- IP66
- Red / Amber / Blue / Green

Ship Horns (Electric & Air Horns) - Compliant with COLREG 1972

Class 1



- For Vessel > 200m in

Class 2



- For Vessel 75m to 200m in Length

Class 3



- For Vessel 20m to 75m in Length

Class 4



- For Vessel < 20m in Length

Switchboard Control & Automation

Fuses



- Cello-lite Fuse
- HRC Knife Fuse
- Cartridge Fuse
- ANL Fuse
- ATO/ATC
- Glass Fuse
- Indicator Fuse
- D Fuse
- Class T Fuses

CZONE - Digital Switching Control



- Touch Screen Display
- Digital Switching
- System Monitoring
- System Operation

Timers & Relays



- 24V / 110V / 220V
- 2pole 8pin
- 3pole 11pin
- 4pole 14pin

Transformers



- Single Phase / Three Phase
- Enclosed / Open Type
- Electronic Isolation



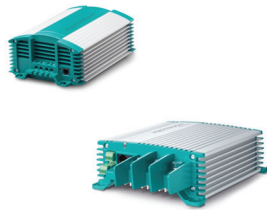
Battery Chargers & Accessories

Battery Chargers



- Nominal Input: 120V/230V
- Nominal Output: 12V/24V/48V
- 6A - 110A
- Solar Charger

DC - DC Converters



- Nominal Input: 12V/24V/48V
- Nominal Output: 13.6/27.2V
- 3A - 50A

Sine Wave Inverters



- Inverter
- Nominal DC Voltage: 12V/24V/48V
- Nominal Output 120V/230V 50/60Hz
- Power Capacity 300W-5000W

Accessories



- Charger Regulator
- Battery Isolator
- Digital Volt Panel
- Modular Cable/ NMEA 2000 Cables
- Batteries
- Masterbus Interfaces

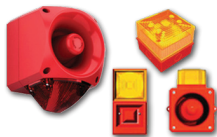
Alarm & Signalling Equipment

Buzzers



- 24V / 110V / 220V
- 80 dB/m / 90 dB/m
- Watertight and Non-Watertight Available

Sounders / Beacons / Combination Units



- 10-60V DC / 115-230V AC
- Sounders - 100 - 120dB/m
- Beacons - Amber / Blue / Red / Green / White
- IP 66

Sirens



- 24V / 110V / 230V
- 100 - 127 dB/m
- IP 65

Hooters



- 24V / 110V / 230V
- IP54 / IP65
- 95 - 120 dB/m

Bells



- 24V / 110V / 230V
- 105.5 - 108.5dB/m
- With Light / Without Light Available

Rotating Lights



- 24V / 110V / 230V
- Amber / Red / Blue

Hour Counters



- 12V - 440V
- Sizes: - 36 X 24mm - 72 X 72mm - 48 X 48mm - 96 X 96mm

Breakers



- ACB (Air Circuit Breaker)
- MCCB (Molded Case Circuit Breaker)
- MCB (Miniature Circuit Breaker)



Marine, Offshore & Industrial Green LED Solutions



Work with Ship Owners and Chandlers for LED Conversions and Retrofits

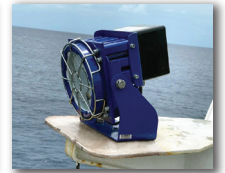


Energy-Efficient up to 90%



ELV Dimming

Replacement of Conventional Floodlight to LED Modular Floodlight onboard Vessel



Safe to use Onboard
EMC Compliant
IEC 60533:2015



< 2 years ROI
(Return of Investment)



Up to 100,000 Hrs,
> 20 years (Based on
12 Hrs Operations)

LED Modular Floodlights



LF60 1 Series
(Narrow & Wide Beam)



LF60 2 Series
(Narrow & Wide Beam)



LF90 1 Series
(Narrow, Medium & Wide Beam)

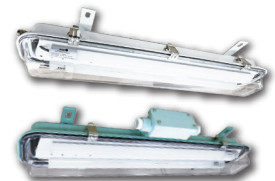


LF90 4 Series
(Narrow, Medium & Wide Beam)

LED Watertight Luminaire



LMWS20 Series (IEC & JIS)
(2ft & 4ft Luminaire)



LWS Series & LWJ Series
(2ft & 4ft Luminaire)

LED Pendant / Wall & Portable Work Lights



LGC Series
(30W/13W/12W/10W)



LGW Series
(30W/13W/12W/10W)



LGP Series
(30W/13W/12W/10W)

Other LED Lights



LED Downlights
(8W/13W/16W/20W)



LED Indoor Lights



Rechargeable
Portable LED Lights

Ex-Proof LED Luminaire



SXF8011 Series
(Narrow & Wide Beam)



SXF8012 Series
(Narrow & Wide Beam)



SXCL Series
(2ft & 4ft Luminaire)



SXPL Series
(13W/12W/10W)

LED Searchlight



RGL80E Series
(Remote Control, 80W)

- Input voltage: 100-220V
- Beam distance: 1000m at 1 Lux
- Peak beam candle power: 1,000,000 cd
- Ideal replacement of 1000W Halogen Lamp